



Two-Post

Automotive Lift Equipment

World-Class Safety and Reliability

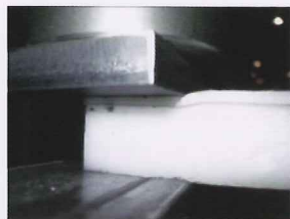


CE



John Bean SOL 3500 Clear Floor 2-Post Lift

Best in class design of uncompromising quality and safety

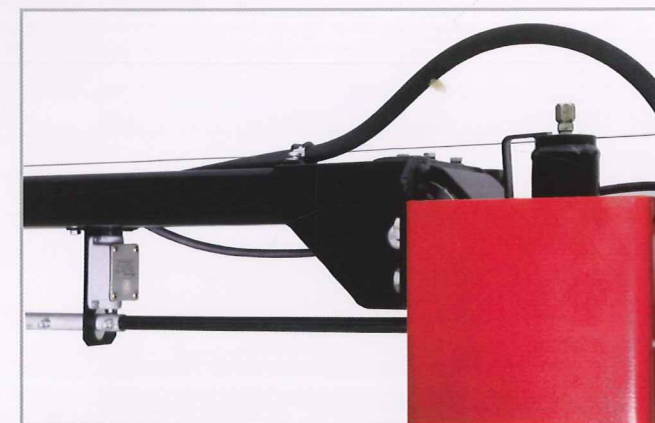
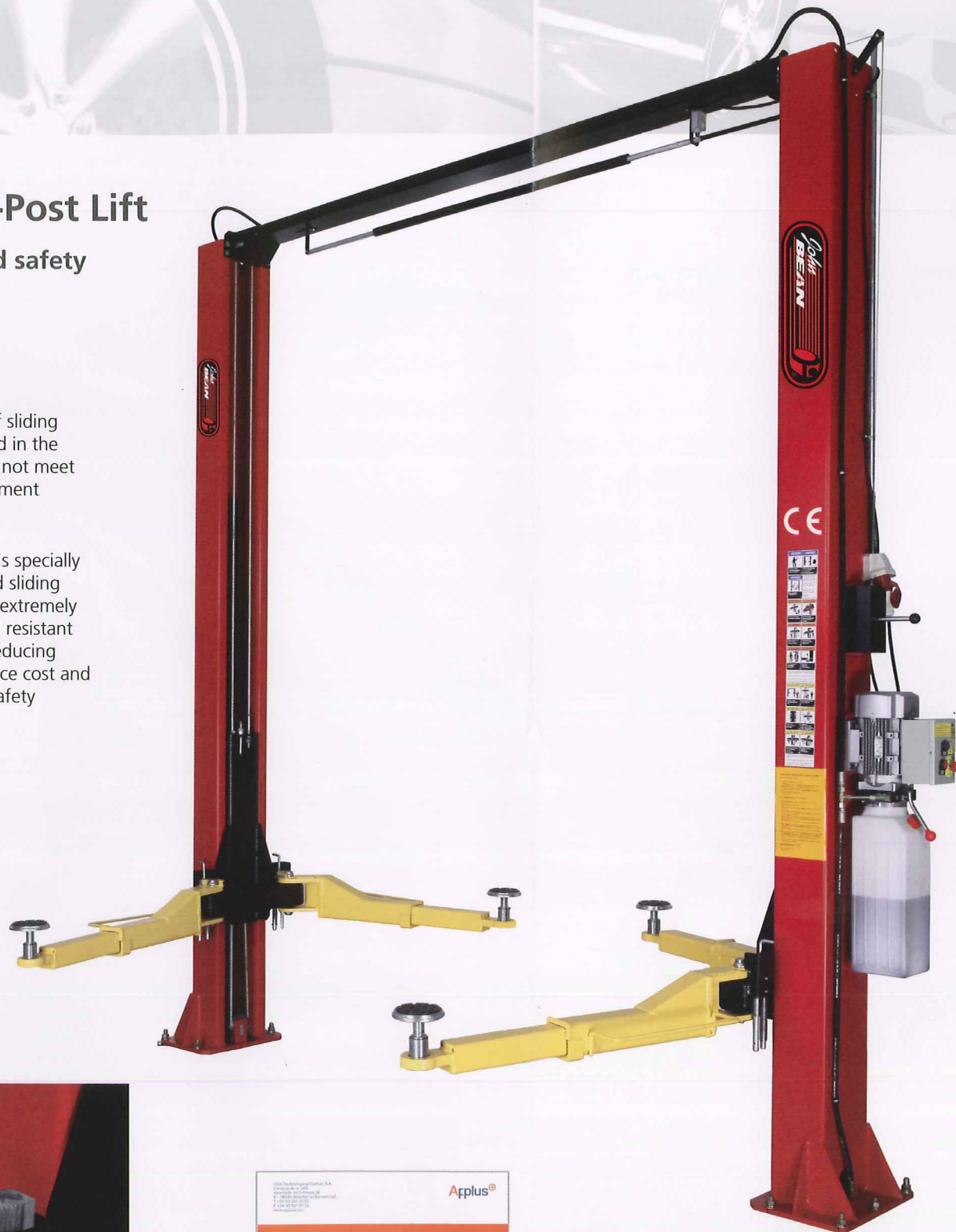


Majority of sliding blocks used in the market do not meet CE requirement



John Bean's specially engineered sliding blocks are extremely strong and resistant to wear, reducing maintenance cost and ensuring safety

The lift carriage sliding blocks are made of specially engineered self-lubricating and low maintenance materials - two characteristics that help reduce operating expenses considerably



Dual Function Overhead Shut-off

Lifting automatically shuts off at full height, regardless if vehicle touches the safety shut-off bar. This prevents cylinders from dead-heading, causing premature failure of expensive cylinder and power units due to excessive pressure



Height-adjustable pad

High grade steel and reinforced arm reduces flex and arm pad adjustment



Designed for very low pick-up points



Quick-release plug ensures safety in case of emergency



- Safe operation using two hands
- Manual lock release
- Emergency stop with key lock to limit use of lift
- Motor overload included
- Hydraulic design with pressure relief system



- Arm Restraint - "sure-fit" teeth engagement with robust design using high strength steel and 25mm thick gears
- Larger restraints and more engagement location for lifting wider range of vehicles
- Designed to be safe and long lasting



CE APPROVED - tested to exact CE standards - able to lift up to 1.5 times rated lifting capacity without permanent deformation

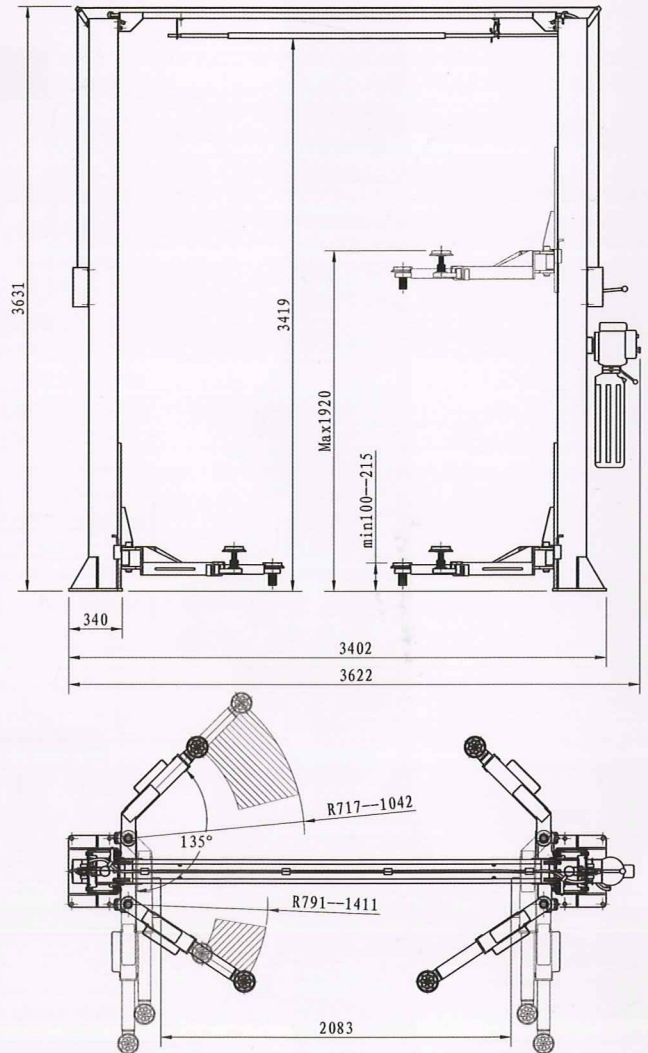


Asymmetrical construction combined with the design of the supporting arms provide good door clearance - either in front of or behind the lifting post



Technical Specifications

Type of Lift	Asymmetrical
Type of Equalization	Cable
Lifting Capacity	3500 kg
Capacity Per Arm	875 kg
Overall Width	3628 mm
Width between Columns	2790 mm
Drive-Thru Width	2080 mm
Overall Height	3631 mm
Under Bar Clearance	3419 mm
Height to Lowered Lift Pad	110 mm
Height to Raised Low Lift Pad	215 mm
Front Arm Retracted Length	717 mm
Front Arm Extended Length	1048 mm
Rear Arm Retracted Length	791 mm
Rear Arm Extended Length	1141 mm
Maximum Lifting Height	1920 mm
Lift Time / Lower Time	49 / 45 seconds
Power Supply	380V-415V, 3 Ph, 50/60 Hz 200V-240V, 1 Ph, 50/60 Hz
Hydraulic Oil Specification	ISO 32 10WT
Hydraulic Oil Capacity	10L
Maximum Operating Pressure	207 bar
Primary Safety	Mechanical lock at every 76mm starting at 610mm
Auxiliary Safety	Load holding valve on power rack
Hydraulic Safety	2 cylinders direct, flow restrictors



Snap-on Equipment

SINGAPORE
Snap-on Tools Singapore Pte Ltd
25 Tagore Lane, #01-02,
Singapore 787602
Tel: (65) 6451-5570 • Fax: (65) 6451-5574

INDONESIA
Snap-on Tools Singapore Pte Ltd - Indonesia Rep. Office
Graham Pratama Building, 20th Floor
Jl. M.T. Haryono Kav 15, Jakarta 12810, Indonesia
Tel: (62-21) 8370-9611 • Fax: (62-21) 8370-9612

MALAYSIA
Snap-on Tools Singapore Pte Ltd - Malaysia Branch
Unit A-2-3, Block A, 3-2, Jaya One
No. 72A, Jalan Universiti
46200 P.J., Selangor, Malaysia
Tel: (603) 7957-3088 • Fax: (603) 7958-2088

PHILIPPINES
Snap-on Tools Singapore Pte Ltd - Philippines Branch
4/F, 2053 Building, Edison Street, San Isidro
Makati City, 1234 Philippines
Tel: (63-2) 843-7935 • Fax: (63-2) 843-7730

THAILAND
Snap-on Tools (Thailand) Co. Ltd.
5th Floor, Talomsim Building, 924 Rama 3 Road
Bangpompang Yannawa, Bangkok 10120, Thailand
Tel: (66) 2294-9660 • Fax: (66) 2294-9665

HONG KONG
Snap-on Tools Hong Kong Limited
Unit 2010, 20/F, Laiford Centre, 838 Lai Chi Kok Road
Cheung Sha Wan, Kowloon, Hong Kong
Tel: (852) 2370-3700 • Fax: (852) 2370-3400

KOREA
Snap-on Tools Korea
#505 & 506, BuCheon Techno Park Block 3,
Building 301, 365 SamJung-Dong, OhJung-Gu
Bucheon City, GyeongGi-do, Korea 421-809
Tel: (82-32) 326-7310 • Fax: (82-32) 326-7312

TAIWAN
Snap-on Tools Hong Kong Limited, Taiwan Branch
3F, -4, #9 Wuchuan 1st Road, Wu-Ku Industry Park
Taipei County 24892, Taiwan ROC
Tel: (886-2) 2298-9789 • Fax: (886-2) 2298-2288

Authorized Reseller: